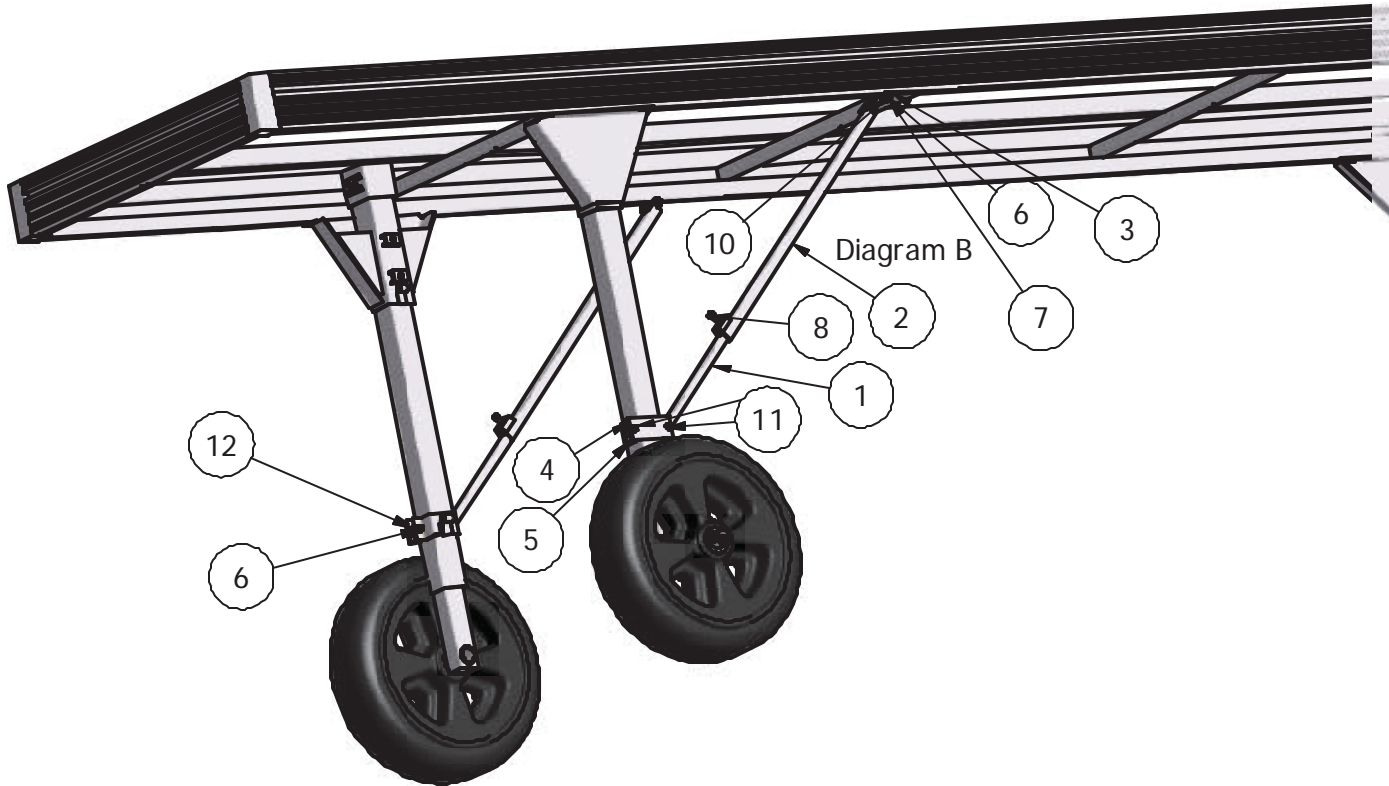


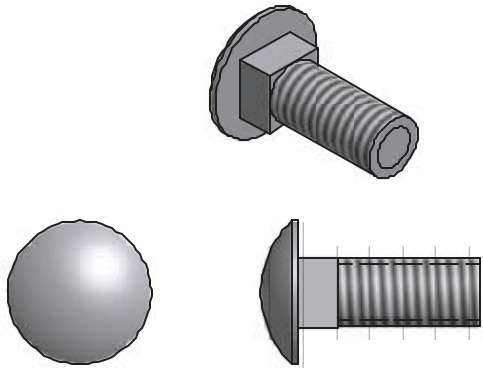


## Deep Water Brace Straight



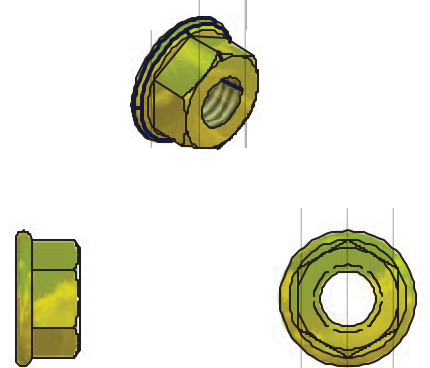
PARTS LIST				
ITEM	QTY	PART NUMBER		DESCRIPTION
1	1	VM-096-01		LOWER LEG BRACE
2	1	VM-096-02		UPPER LEG BRACE
3	2	VM-096-05		MACHINED HINGE
4	2	VM-096-04		CLAMP PLATE
5	2	VM-096-03		3 in CLAMP XMNT
6	8	HD-00056		3/8 BRASS FLANGE NUT
7	2	ND-00059		3/8 X 1 CARR BOLT (SS)
8	2	HD-00060		1/2-13 X 1.25 SQ HEAD (SS)
9	2	ND-00058		1/2" SQ NUT BRASS
10	4	HD-00127		3/8-16 X 2" HEX BOLT (SS)
11	2	HD-00117		3/8-16 X 2.5" HCS BOLT (SS)
12	2	100310-001000H		SPACER

7



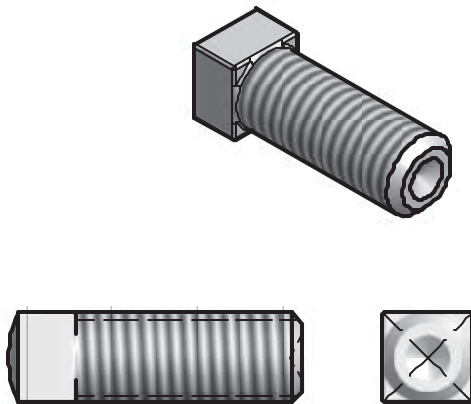
3/8 X 1 CARRIDGE BOLT SS (2 REQ'D)

6



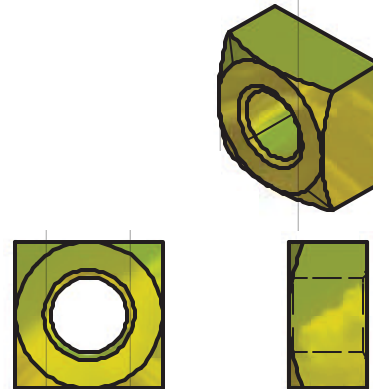
3/8 FLANGE NUT BRASS (8 REQ'D)

8



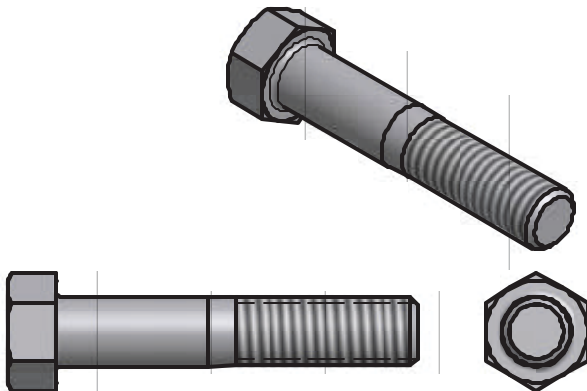
1/2-13 X 1.25 SQ BOLT SS (2 REQ'D)

9



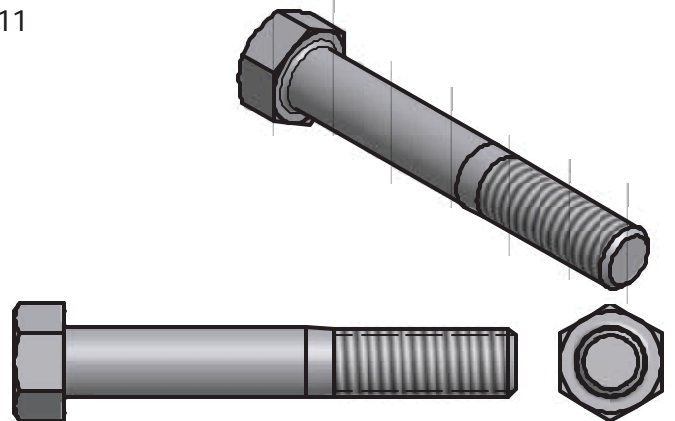
3/8 SQ NUT BRASS (2 REQ'D)

10



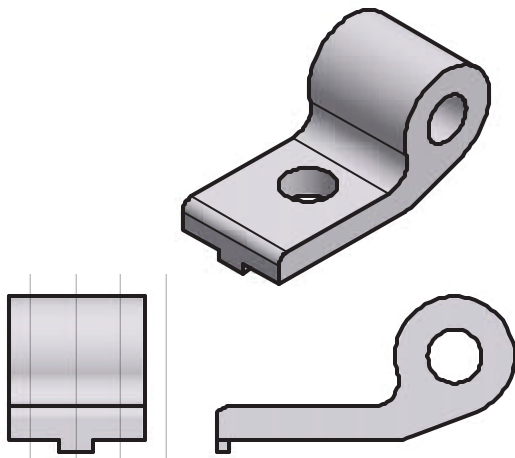
3/8 -16 X 2" BOLT SS (2 REQ'D)

11



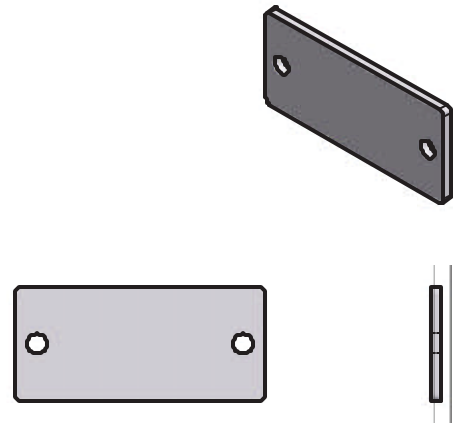
3/8 -16 X 2.5" BOLT SS (4 REQ'D)

3



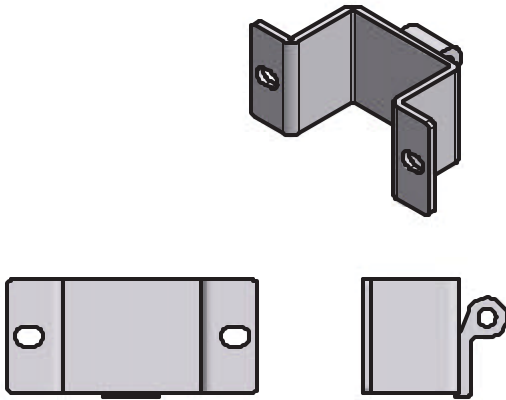
MACHINED HINGE (2 REQ'D)

4



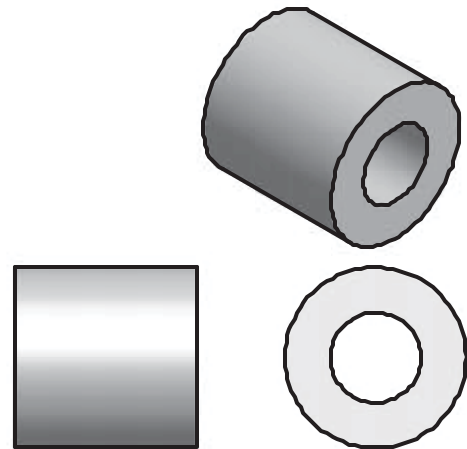
CLAMP PLATE (2 REQ'D)

5



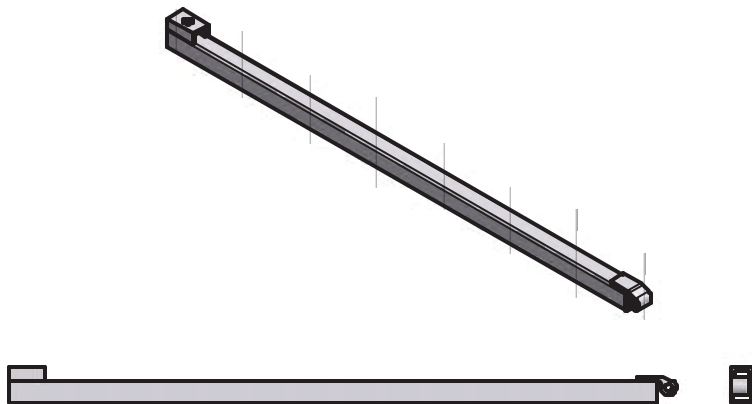
3in CLAMP (2 REQ'D)

12

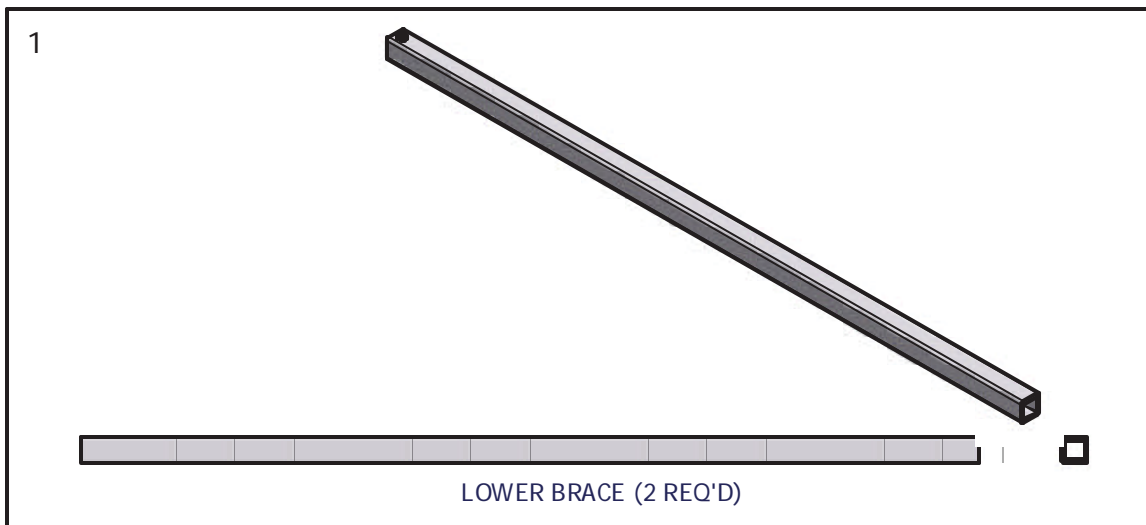


SPACERS (2 REQ'D)

2



UPPER BRACE (2 REQ'D)



**To insure your safety while assembling your Voyager product:**

- Fully read and understand the assembly instructions
- Do not assemble this product if items are missing or damaged
- Wear protective gloves, clothing and eye wear when assembling this product

**Installation procedure**

The following tools will be needed: 2-9/16" wrenchs, 1-1/2" wrench

1. Insert head of carriage bolt into raceway on the underside of the dock rail and slide toward screw leg. **Per diagram A.**
2. Attach machined hinge to carriage bolt with flange nut, leave loose at this time. **Per diagram B.**
3. Take clamp, clamp plate, spacer & attach to screw leg (spacer goes on lake end of clamp), leave loose at this time. **See diagram C.**
4. Slide upper brace into lower brace, put ½" square nut into channel on brace (**see diagram D**) flat side of nut towards bolt head. Start bolt into nut and into tube slightly to hold nut in place, do not tighten at this time.
5. Hook end of brace with hinge welded on, to machined hinge. **Per diagram E.**
6. Hook drilled end of brace to clamp on screw leg. **Per diagram F.**
7. Position brace evenly. **Per diagram G.**
8. Using 9/16" wrenches tighten clamp bolts, bolt to machined hinge, bolts on braces to hinge and clamp.
9. Take ½" wrench and tighten set bolt on brace per diagram.
10. Repeat steps 1-9 for 2<sup>nd</sup> brace.

