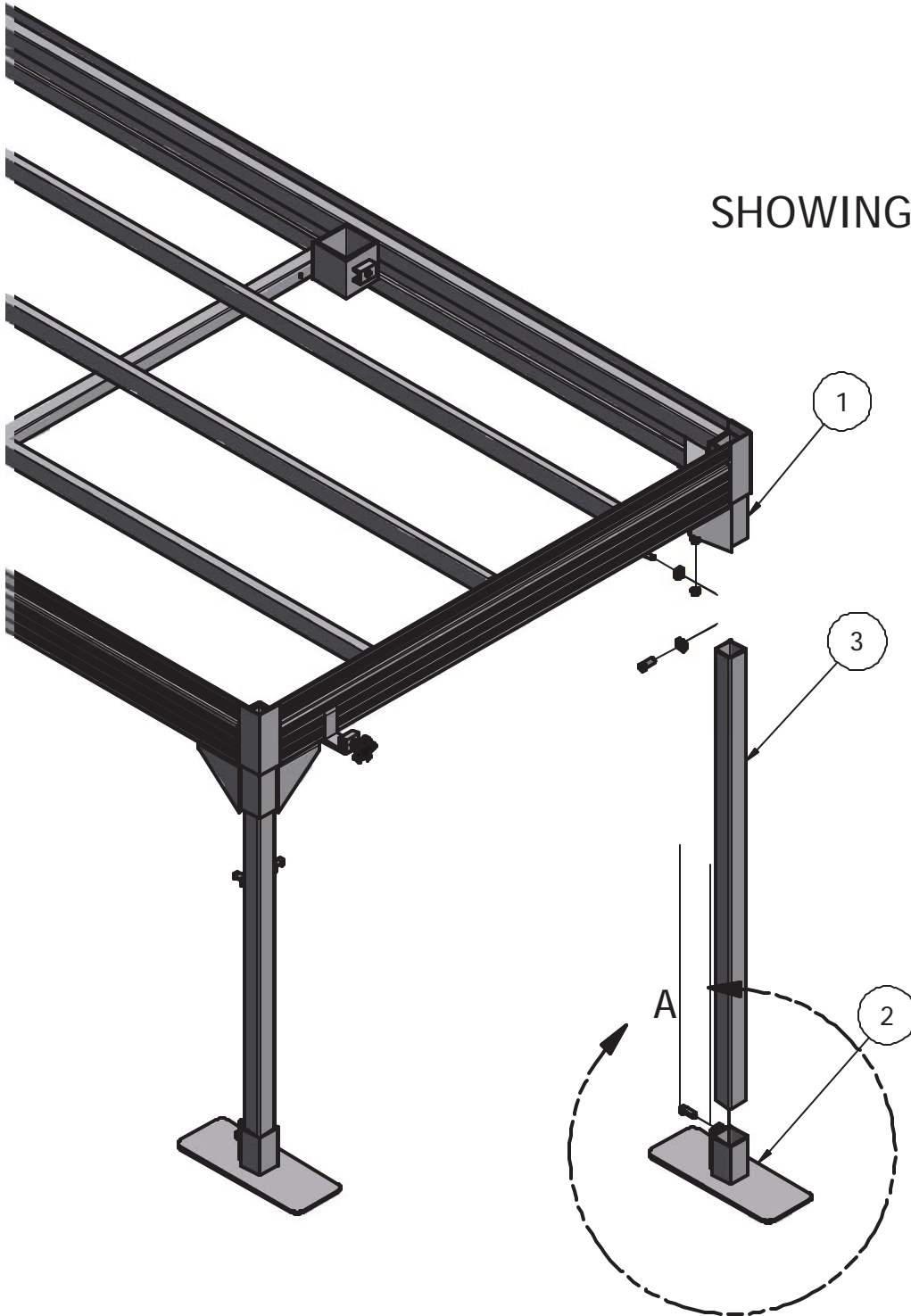


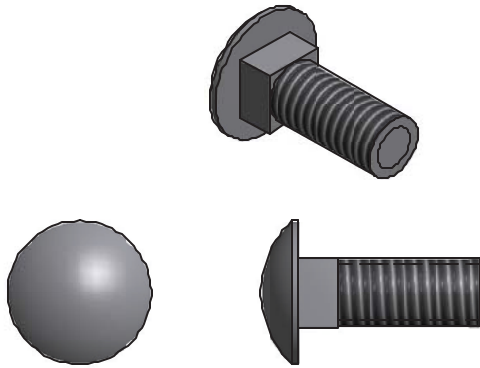


Standing Dock

SHOWING 5' WIDE DOCK

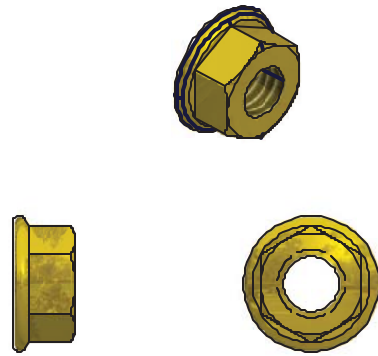


7



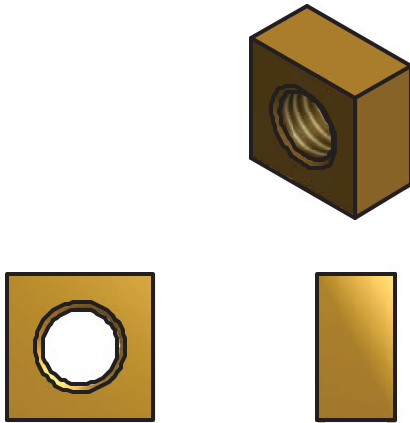
3/8 X 1 S.S. CARRIDGE BOLT (4 REQ'D)

5



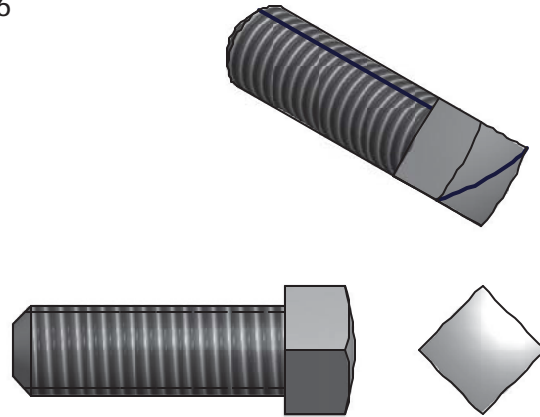
3/8 FLANGE NUT (4 REQ'D)

4



1/2 SQ. NUT BRASS (10 REQ'D)

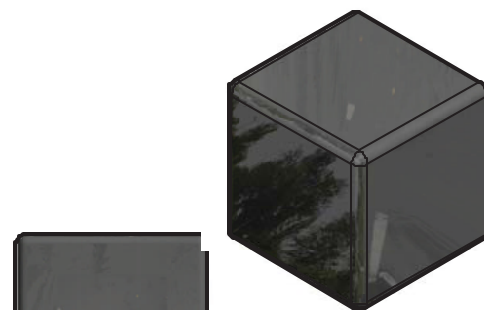
6



1/2 X 1 1/4 SQ. HEAD BOLT (8 REQ'D)



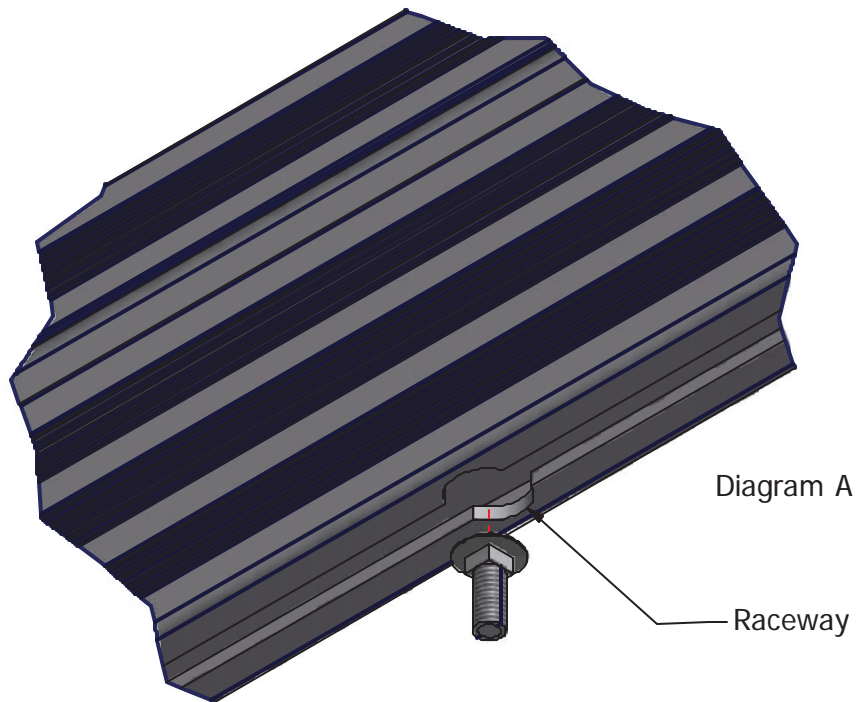
5 PRONG KNOB (2 REQ'D)



LEG CAPS (2 REQ'D)

PARTS

1 - DOCK FRAME
1 - VM-052 STANDING DOCK LEG KIT



PARTS INCLUDED IN THE VM-052 KIT

PARTS LIST			
ITEM	QTY	PART NUMBER	DESCRIPTION
1	2	VM-007	LEG SOCKET ASM, [NS]
2	2	VOY001-FOOTPAD	DETACHABLE FOOTPAD
3	10	HD-00058	1/2 SQ_NUT BRASS
4	4	HD-00056	3/8 FLANGE BRASS NUT
5	8	HD-00060	1/2 X 1 1/4 SQ BOLT S/S
6	4	HD-00059	3/8 X 1 CAR S/S
7	2	HD-00159	5 PRONG KNOB
8	2	VM-112	DOCK BRACKET

To insure your safety while assembling your Voyager roll in dock:

- Fully read and understand the assembly instructions
- Do not assemble this product if items are missing or damaged
- Wear protective gloves, clothing and eye wear when assembling this product
- For best results find a flat area with plenty of room to assemble the dock

Before assembly you will need to determine your dock layout and water depths. Once layout is figured out take water depth measurements where dock will be located, take measurements at point of every dock section joint (the distance apart to measure will depend on dock lengths used and layout). Make sure length of dock leg will compensate for distance dock is out of the water and also water fluctuation. You will need to decide if add-on legs are going to be flush with bottom of decking or if leg will stick above decking and how much.

❖ *Note: You may need assistance when turning dock over and also when installing dock into the water.*

Installation procedure

The following tools will be needed: 1/2" wrench, 9/16" wrench, tape measure, marking utensil, level and cut off saw.

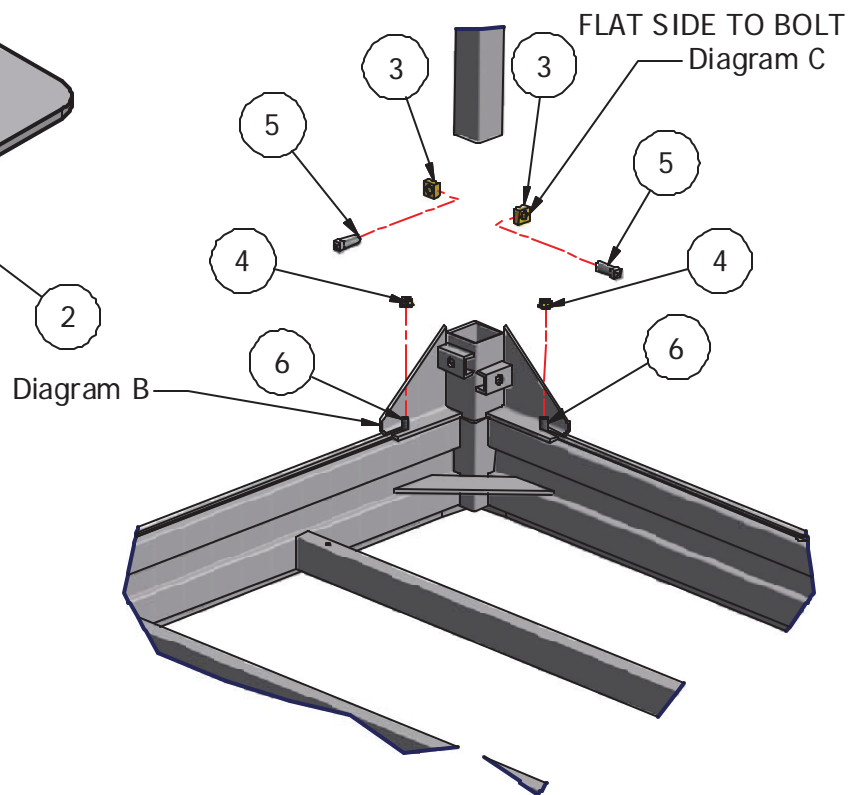
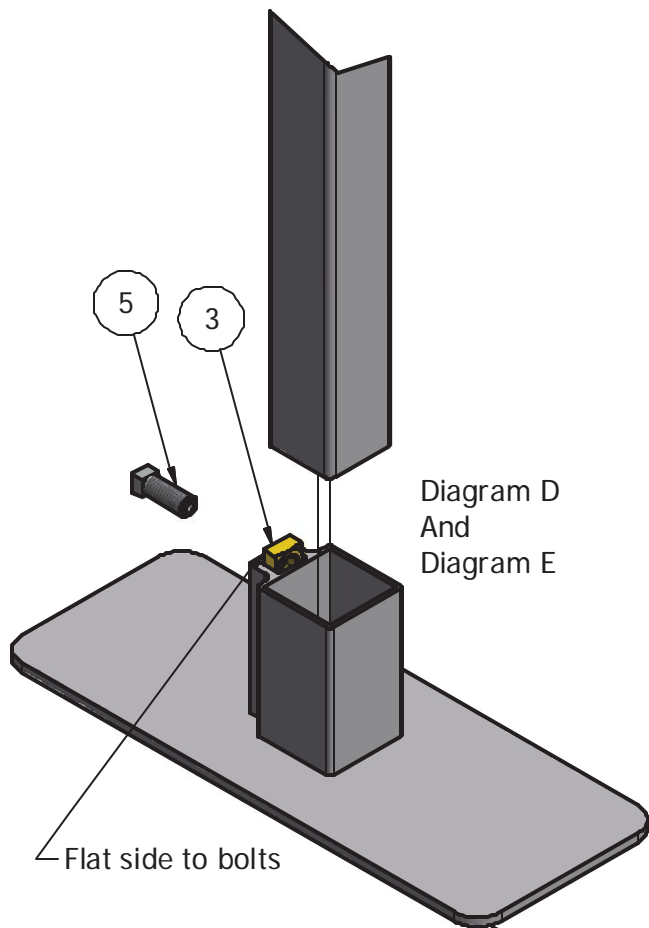
- 1) For ease of installation set dock frame upside down on a flat surface.
- 2) Insert head of 2- carriage bolts into raceway on the underside of dock rail, one on side rail and one on end rail. **Per diagram A.**
- 3) Slide bracket into corner post of dock, slide carriage bolts into bracket slots and attach flange nuts. **Per diagram B.**
- 4) Take 9/16" wrench and tighten flange nuts.
- 5) Put square nuts into bracket and start bolts in nut to keep in place. **Per diagram C.**
- 6) Take foot pad and slide square nut into place and start bolt to keep in place. **Per diagram D.**
- 7) Slide dock leg into dock bracket*, using leg length determined earlier.
- 8) Put foot pad onto leg and tighten set bolt with 1/2" wrench. **Per diagram E.**

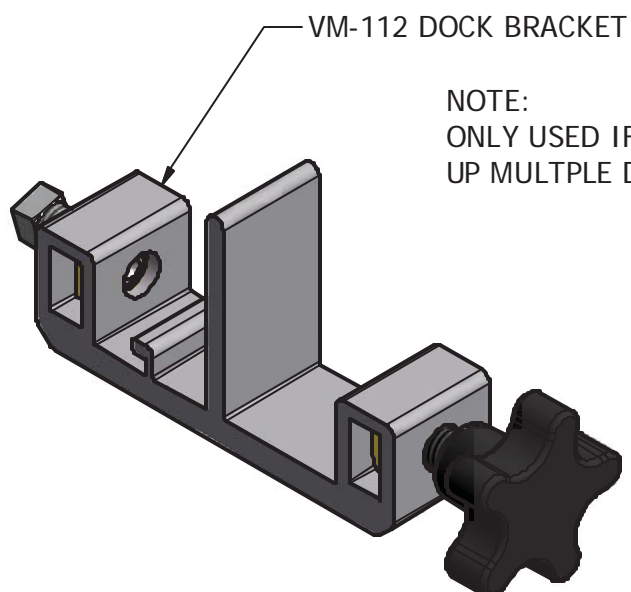
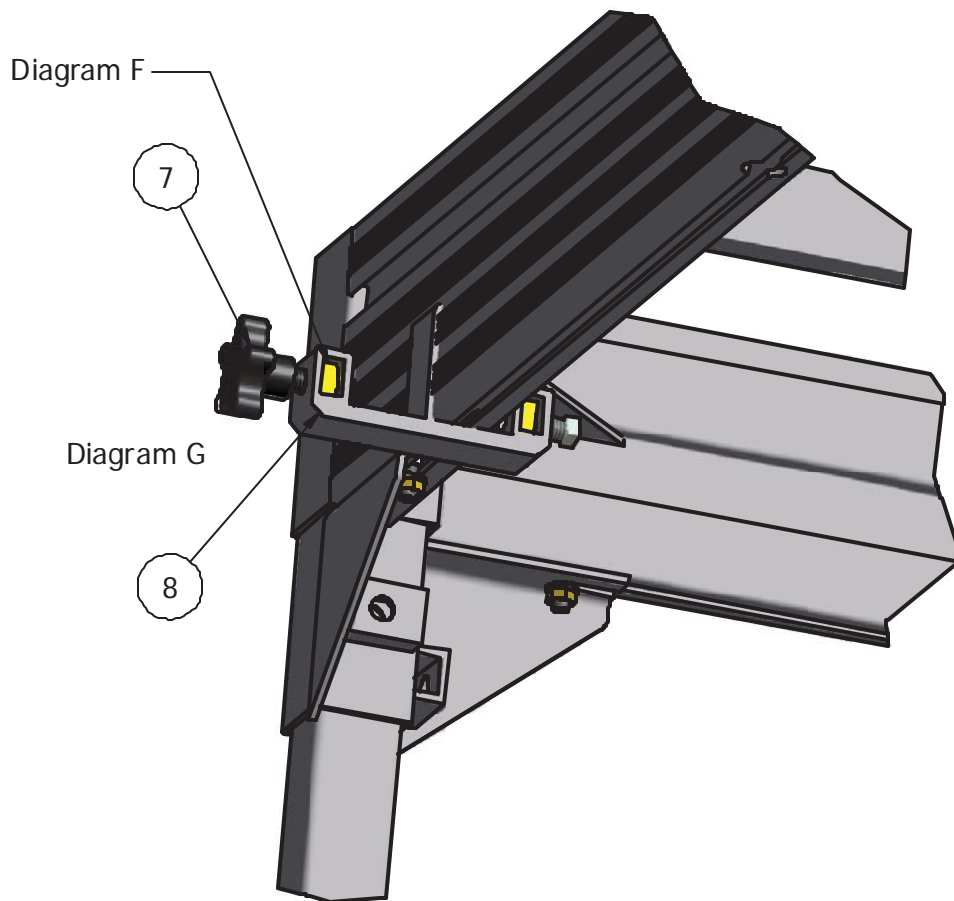
- 9) Put leg to desired height using tape measure (dock may have to be blocked up to put leg all the way in or leg can be put in flush at this time and adjusted once dock is put into place) and tighten one set bolt at this time or both firmly to keep leg in place for dock installation using a ½" wrench.
- 10) Repeat steps 2-9 for second bracket.
- 11) If this is last dock frame skip to step 14. *If connecting multiple dock go to step 12.*
- 12) Take connector brackets** slide square nuts into it and start set bolts in one nut and 5 prong knob in other nut (screw in enough to keep nuts in place). **Per diagram F.**
- 13) Put bracket on dock frame in desired location and tighten set bolt with ½" wrench and leave 5 prong knob as is until next dock is put in place per dock instruction manual. **Per diagram G.**
- 14) Dock can now be tipped over to upright position.
- 15) Install dock frame into water, check dock height, set and level. When height and level are set tighten set bolts with ½" wrench.
- 16) Check to make sure all hardware is in and tight.
- 17) Panels can be set in frames as you go or after all dock frames are in place. Some panels will have to be notched for legs if not flush mounted.
- 18) If dock legs are installed above deck install caps to top of legs***. **Per diagram H**

***dock leg not supplied in kit, sold separate.**

**** Connector brackets are used for hooking another dock frame together with this one otherwise won't be used.**

*****if legs are flush mounted caps won't be used.**





NOTE:
ONLY USED IF HOOKING
UP MULTIPLE DOCKS.

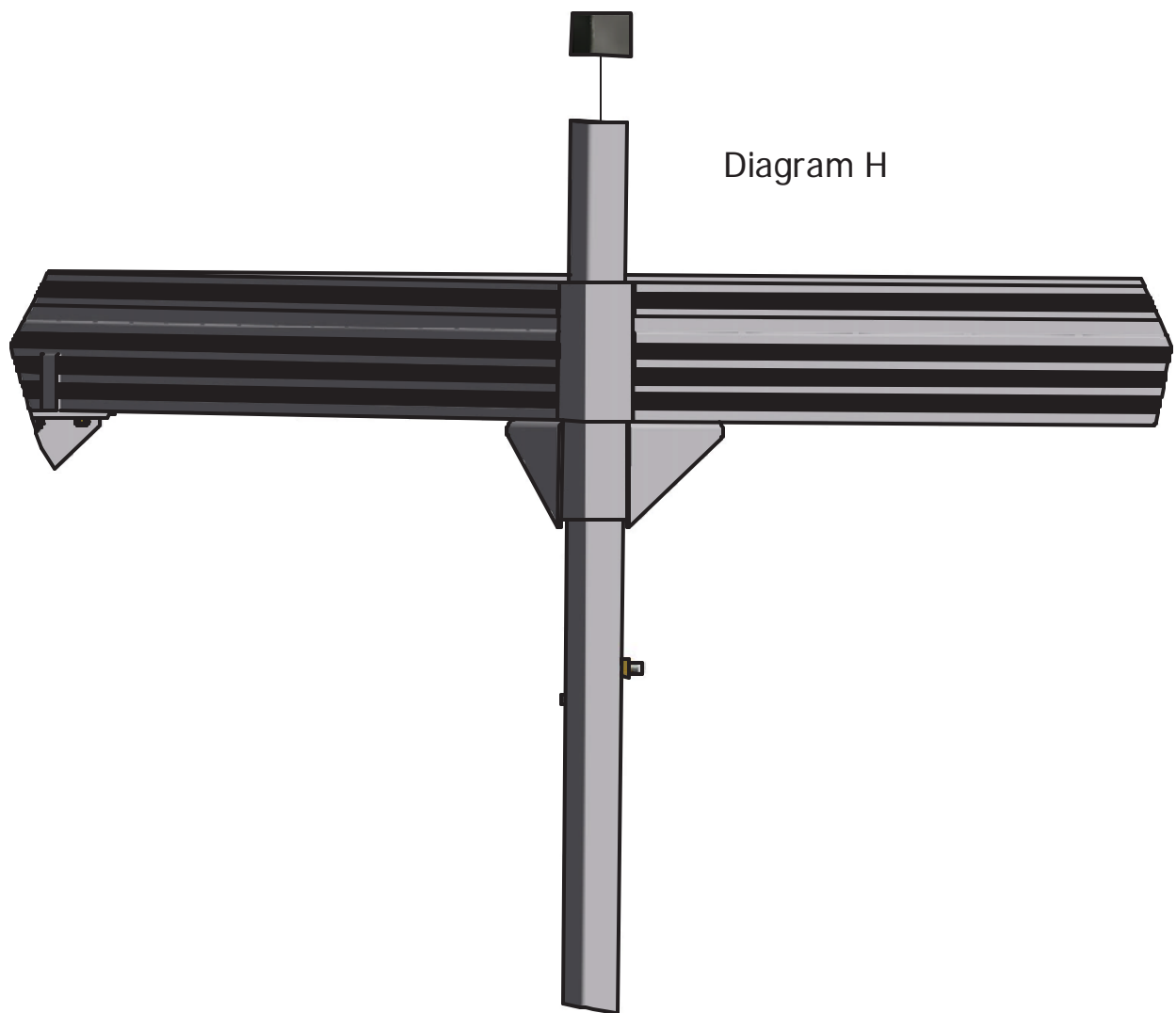


Diagram H