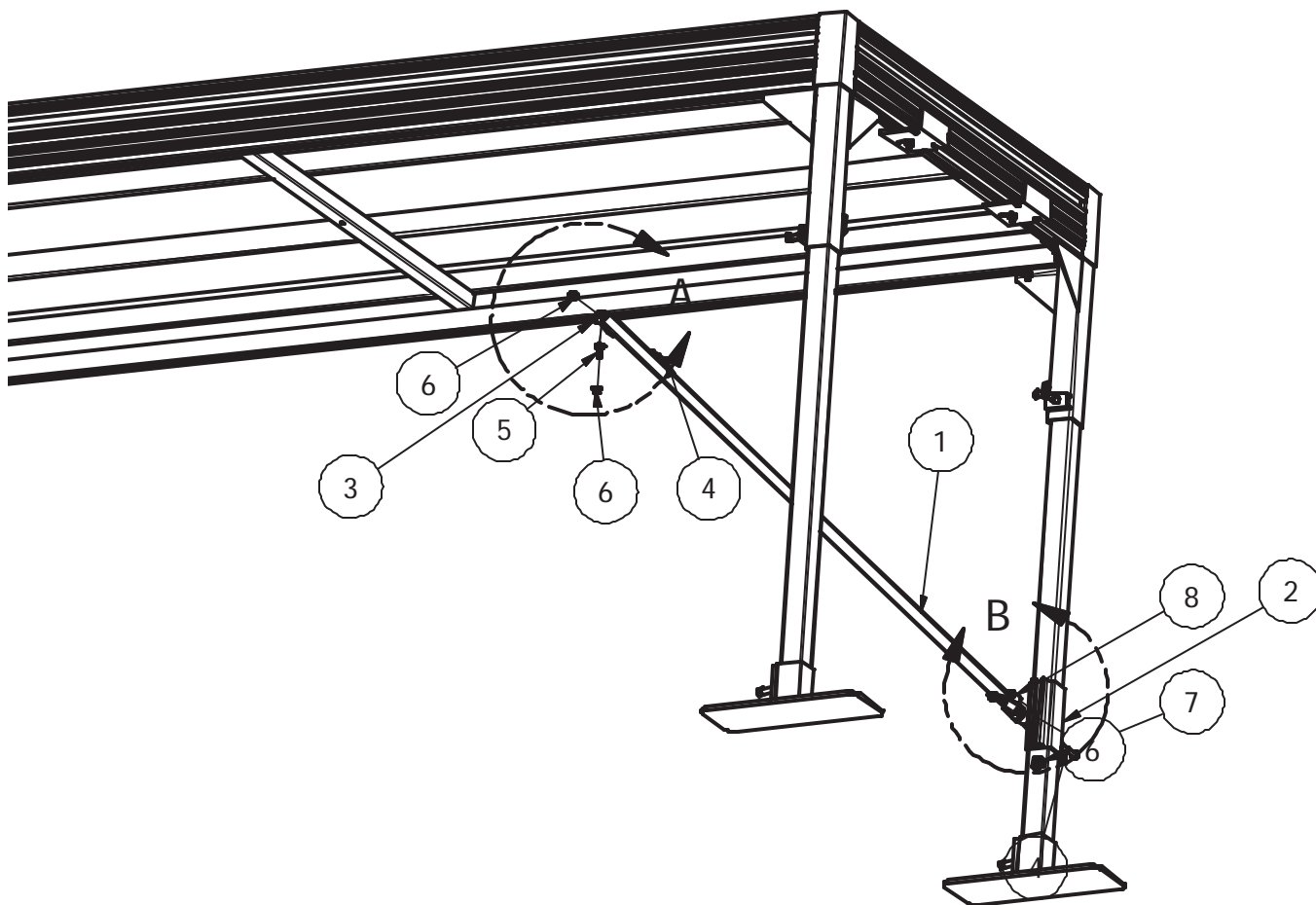
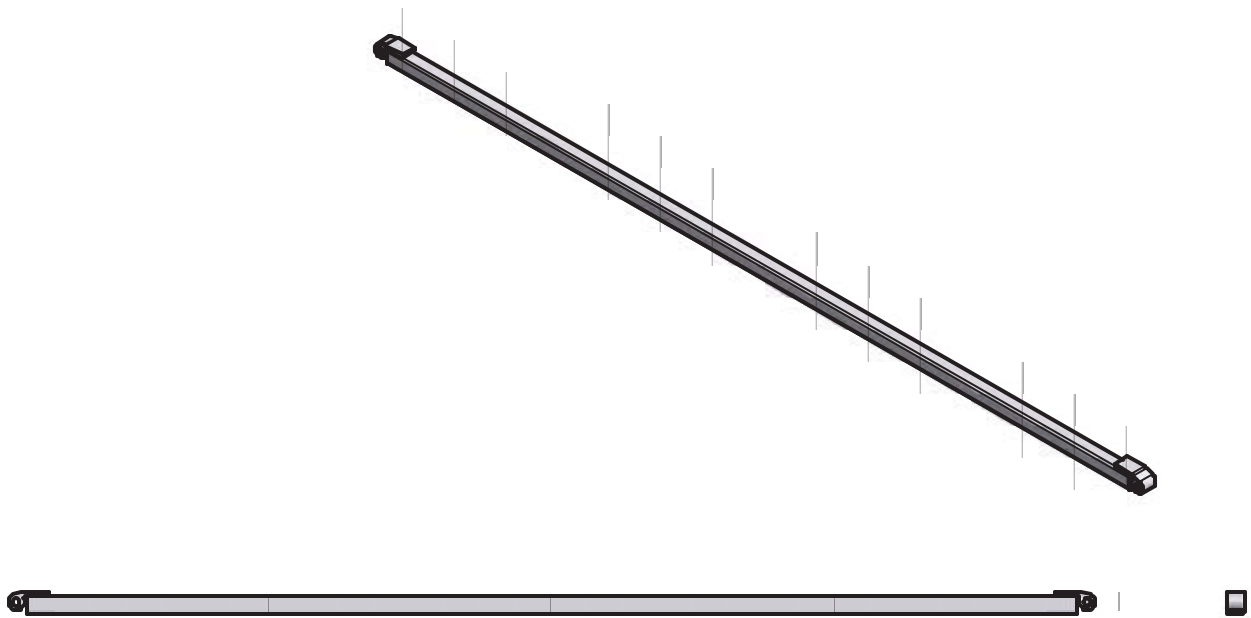




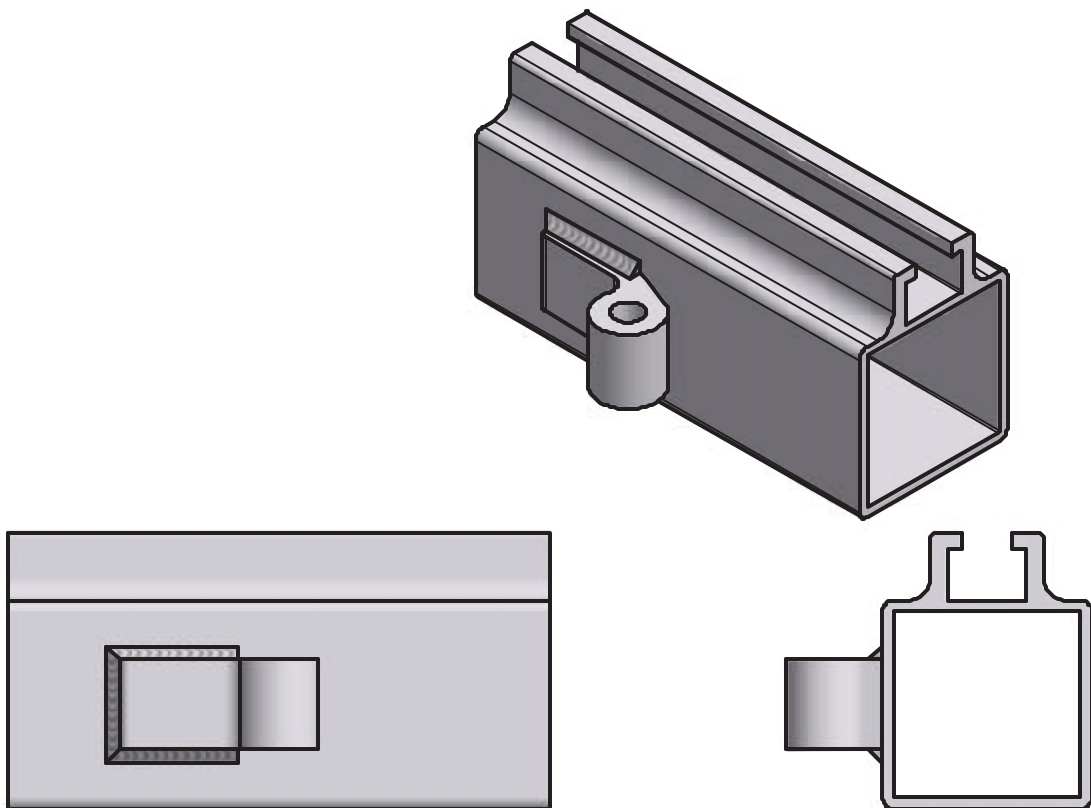
Standing Dock Deep Water Kit



PARTS LIST			
ITEM	QTY	PART NUMBER	DESCRIPTION
1	1	VM-094-01	BRACE
2	1	VM-094-2	LEG BRACKET
3	1	VM-096-5	MACHINED HINGE
4	2	HD-00117	3/8-18 X 2.5 HCS BOLT (S/S)
5	1	HD-00059	3/8 X 1 SS CAR
6	2	HD-00056	3/8 BRASS FLANGE NUT
7	1	HD-00058	ROUND NUT SQ 1/2-13 BRASS
8	1	HD-00060	1/2-13 X 1 1/4 SQ SS BOLT

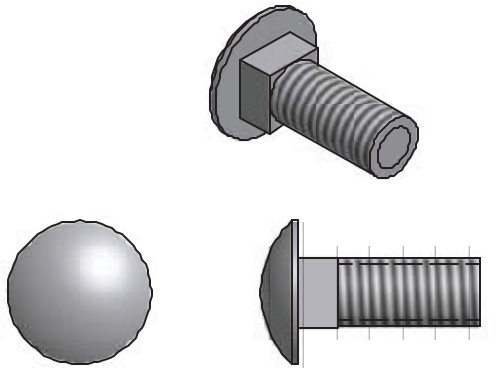


BRACE (1 REQ'D)



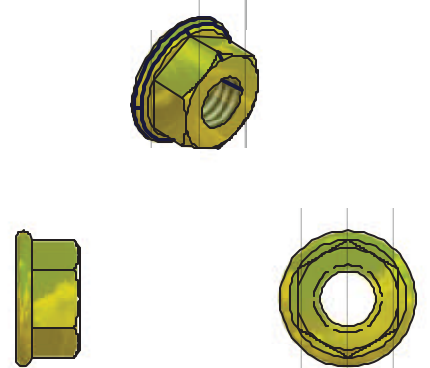
LEG BRACKET (1 REQ'D)

5



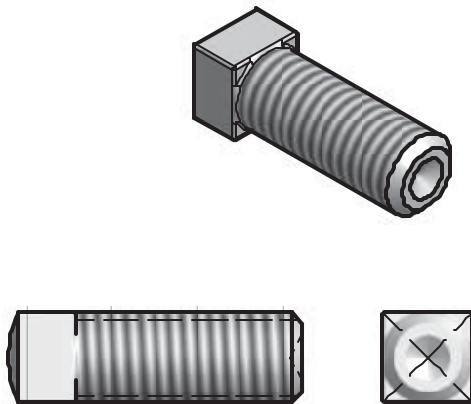
3/8 X 1 CARRIDGE BOLT SS (2 REQ'D)

6



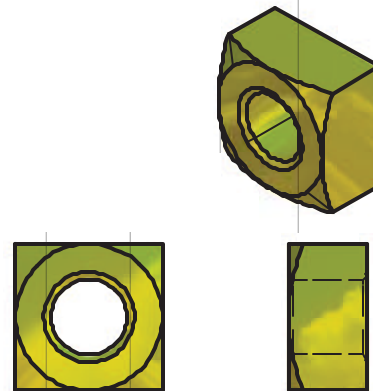
3/8 FLANGE NUT BRASS (4 REQ'D)

8



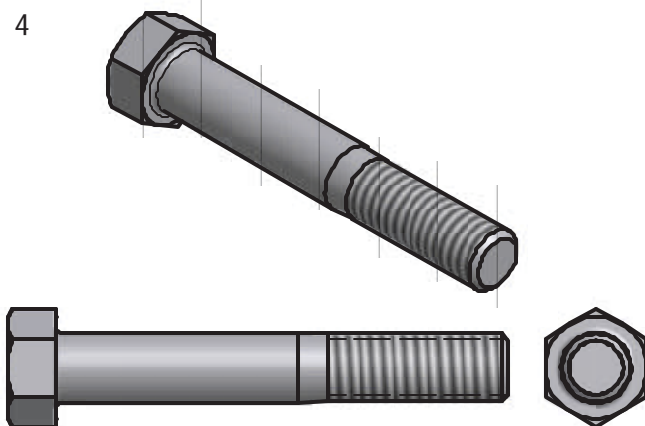
1/2-13 X 1.25 SQ BOLT SS (2 REQ'D)

7



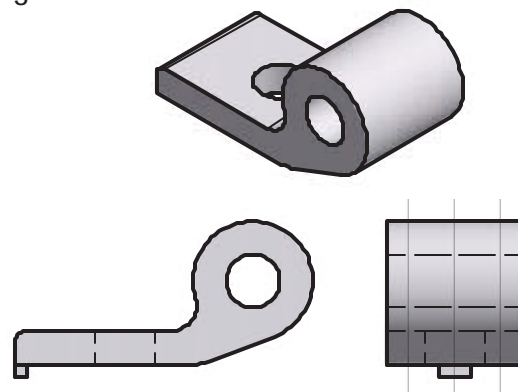
1/2 SQ NUT BRASS (2 REQ'D)

4



3/8 - 18 X 2.5 BOLT SS (4 REQ'D)

3



MACHINED HINGE (2 REQ'D)

To insure your safety while assembling your Voyager product:

- Fully read and understand the assembly instructions
- Do not assemble this product if items are missing or damaged
- Wear protective gloves, clothing and eye wear when assembling this product

Installation procedure

The following tools will be needed: 2-9/16" wrenchs, 1-1/2" wrench

1. Insert head of carriage bolt into raceway on the underside of the dock rail and slide toward screw leg. **Per diagram A.**
2. Attach machined hinge to carriage bolt with flange nut, leave loose at this time. **Per diagram B.**
3. The clamp on screw leg for brace loosen slightly (one on opposite side of where brace is going), take other bolt out completely, remove spacer and leave bolt out at this time. **See diagram C.**
4. Slide upper brace into lower brace, put 1/2" square nut into channel on brace (**see diagram D**) flat side of nut towards bolt head. Start bolt into nut and into tube slightly to hold nut in place, do not tighten at this time.
5. Hook upper end of brace to machined hinge. **Per diagram E.**
6. Hook lower end of brace to clamp on screw leg and replace bolt and nut taken out in step 3. **Per diagram F.**
7. Position brace evenly. **Per diagram G.**
8. Using 9/16" wrenches tighten clamp bolts, bolt to machined hinge, bolts on braces to hinge and clamp.
9. Take 1/2" wrench and tighten set bolt on brace. **Per diagram H.**
10. Repeat steps 1-9 for 2nd brace.

PARTS LIST			
ITEM	QTY	PART NUMBER	DESCRIPTION
4	2	HD-00117	3/8-18 X 2.5 HCS BOLT (S/S)
6	2	HD-00056	3/8 BRASS FLANGE NUT
7	1	HD-00058	ROUND NUT SQ 1/2-13 BRASS
8	1	HD-00060	1/2-13 X 1 1/4 SQ SS BOLT

