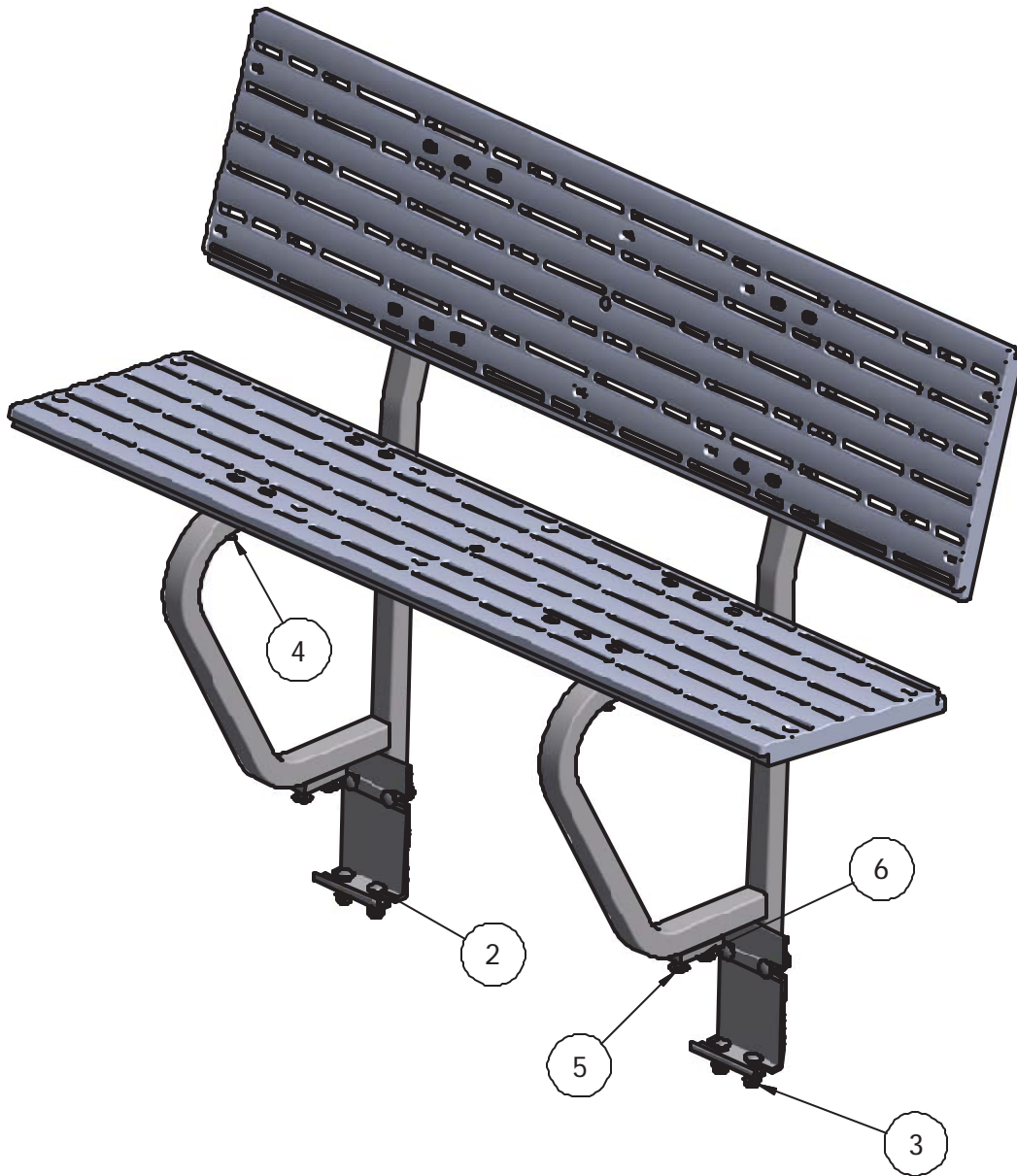


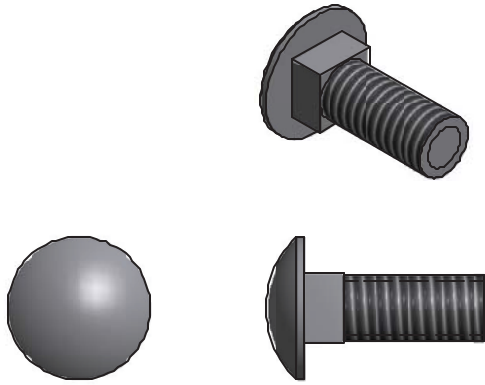


Titan Bench



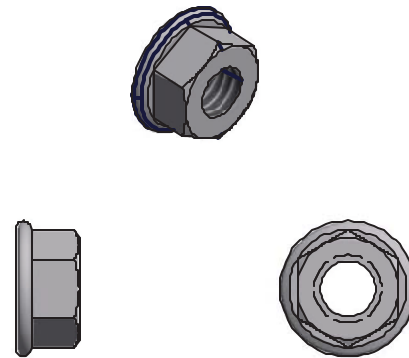
PARTS LIST			
ITEM	QTY	PART NUMBER	DESCRIPTION
1	2	HD-00112	1 1/4 SQUARE CAP PLUG (BLACK)
2	8	HD-00059	3/8 X 1" CB (S/S)
3	8	HD-00056	3/8 FLANGE NUT (BRASS)
4	8	HD-00148	#14 X 2" SELF DRILLING SCREW (S/S)
5	4	HD-00174	#10 1 X 1" SELF TAP SCREW (S/S)
6	2	HD-179-07	DECK SHIM

2



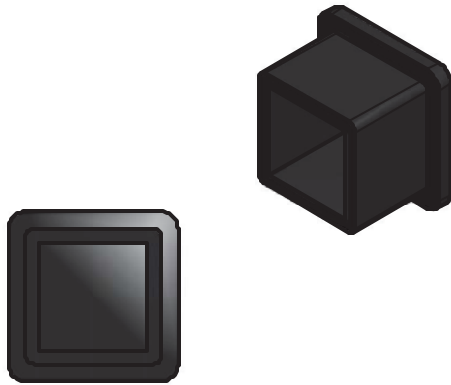
3/8 X 1 S/S CARRIDGE BOLT (8 REQ'D)

3



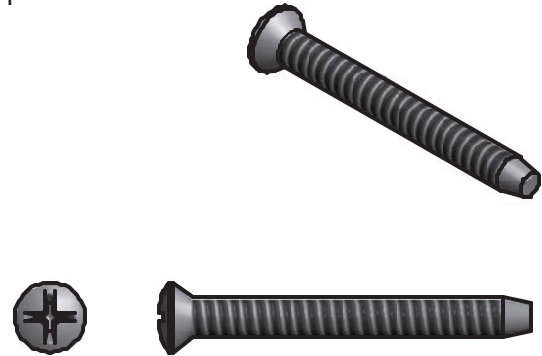
3/8 FLANGE NUT BRASS (8 REQ'D)

1



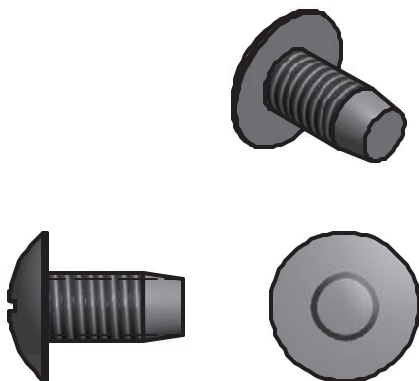
1 1/4 CAP PLUG (2 REQ'D)

4

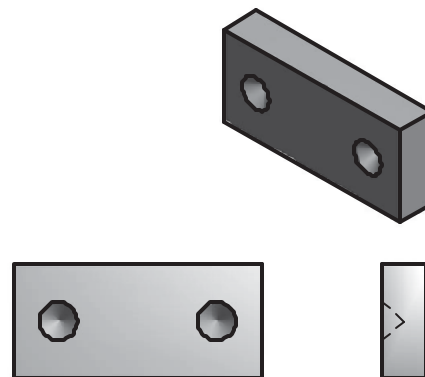


#14 SELF DRILLING FLAT SCREW (8 REQ'D)

#10 SELF DRILLING FLAT SCREW (4 REQ'D)



DECK SHIM (PLASTIC) (2 REQ'D)



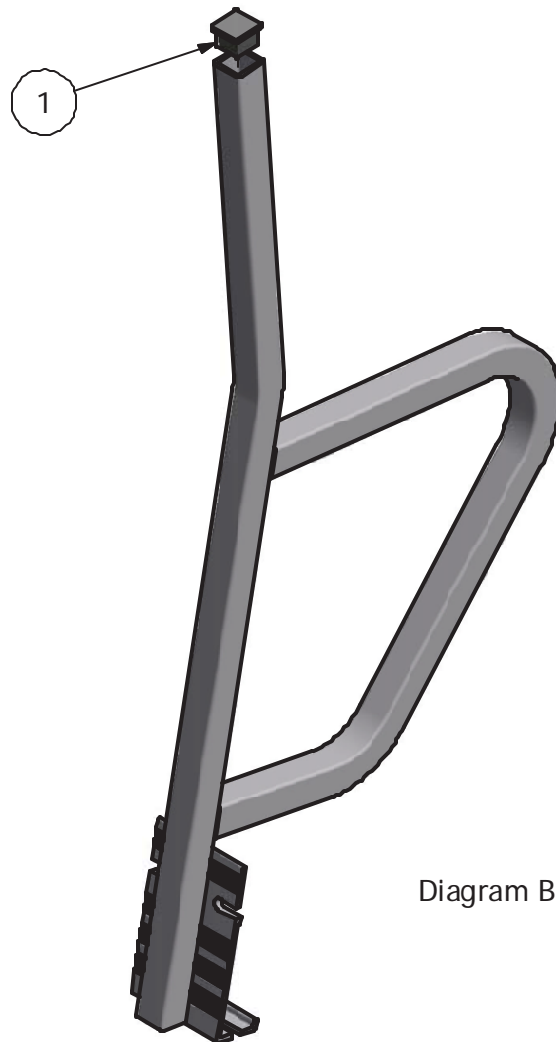
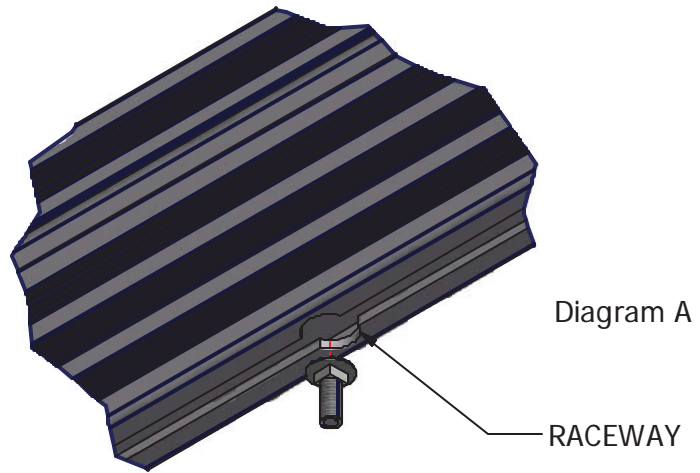
To insure your safety while assembling your Voyager product:

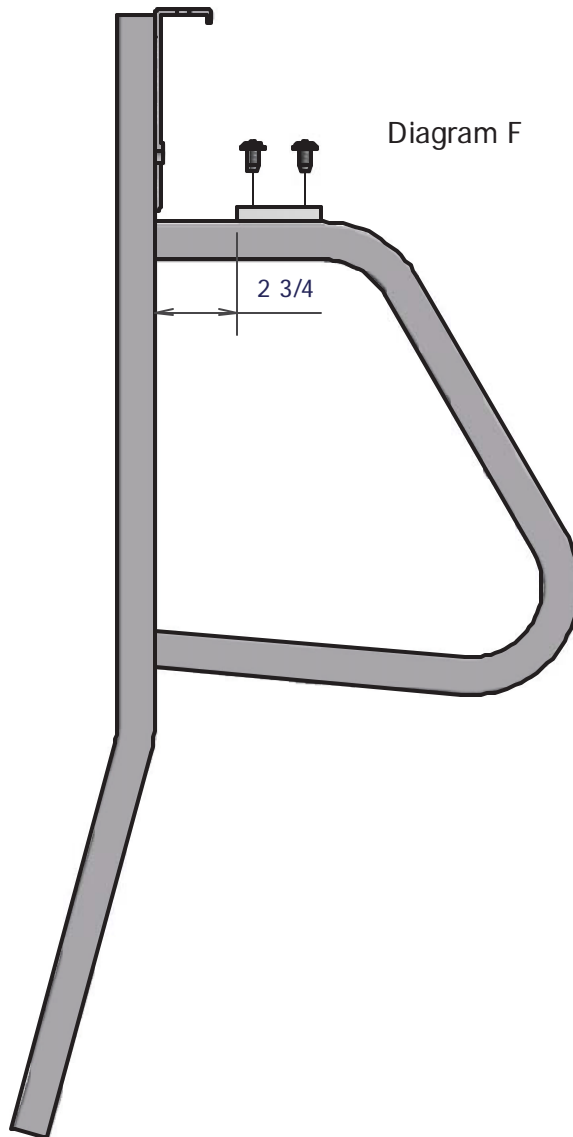
- Fully read and understand the assembly instructions
- Do not assemble this product if items are missing or damaged
- Wear protective gloves, clothing and eye wear when assembling this product
- Check tightness of all hardware each year to avoid injury

Installation procedure

The following tools will be needed: (2) 9/16" wrenches, (2) 1/2" wrenches, Phillips screw driver or screw gun.

1. Insert head of 4 carriage bolts into raceway on the underside of the rail and slide to desired location on dock. **Per diagram A.**
2. Install 1 1/4" caps into the top of bench leg frames. **Per diagram B.**
3. If using on dock with Titan X-series decking skip to line 6. If used on dock with Titan Classic deck, or similar height deck, a shim will need to be attached to bottom of the bench legs.
4. Set bench leg upside down and attach shim with self drilling screws to leg. **Per diagram F.**
5. Repeat step 4 for second bench leg.
6. Hook first bench leg into side of dock rail at desired location and slide carriage bolts into brackets. Finger tighten nuts at this time. **Per diagram C**
7. Repeat step 3 for second bracket.
8. Attach Titan tread assemblies to bench leg frames (for bench seat and backrest) using 8 self drilling screws. **Per diagram D.**
9. Once bench is in desired location, put carriage bolt into raceway on the side of dock, slide into bench bracket and install flange nut. **Per diagram E.**
10. Repeat step 6 for remaining 3 carriage bolts.
11. Use 9/16" wrench to tighten all 8 mounting bolts (carriage bolts).





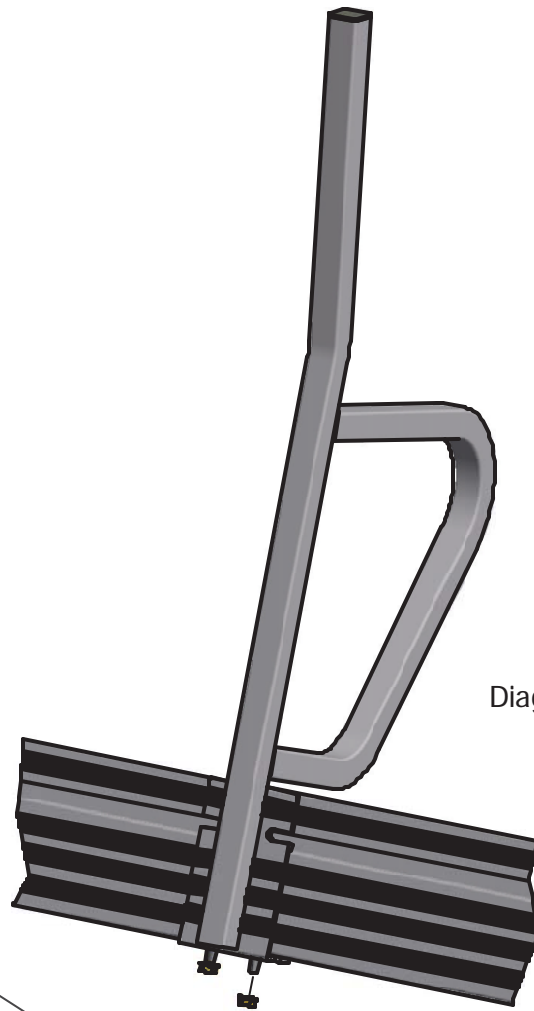


Diagram C

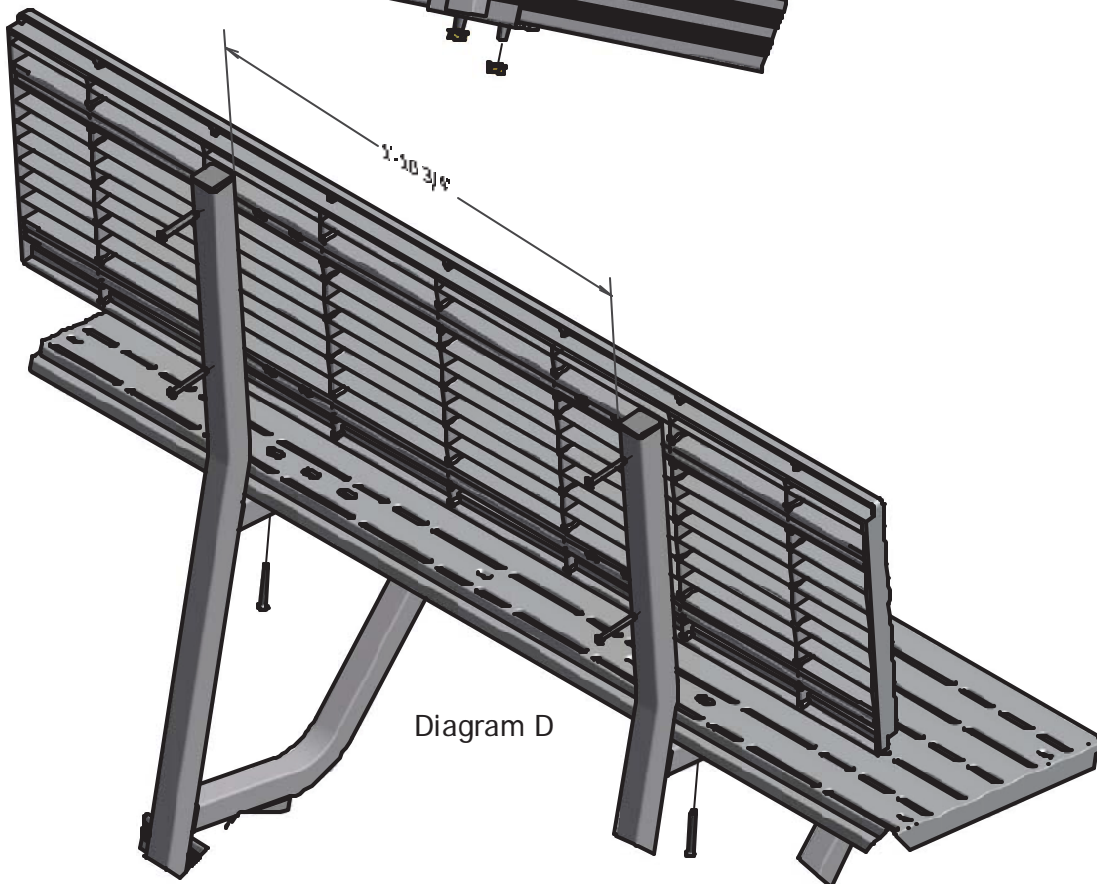


Diagram D

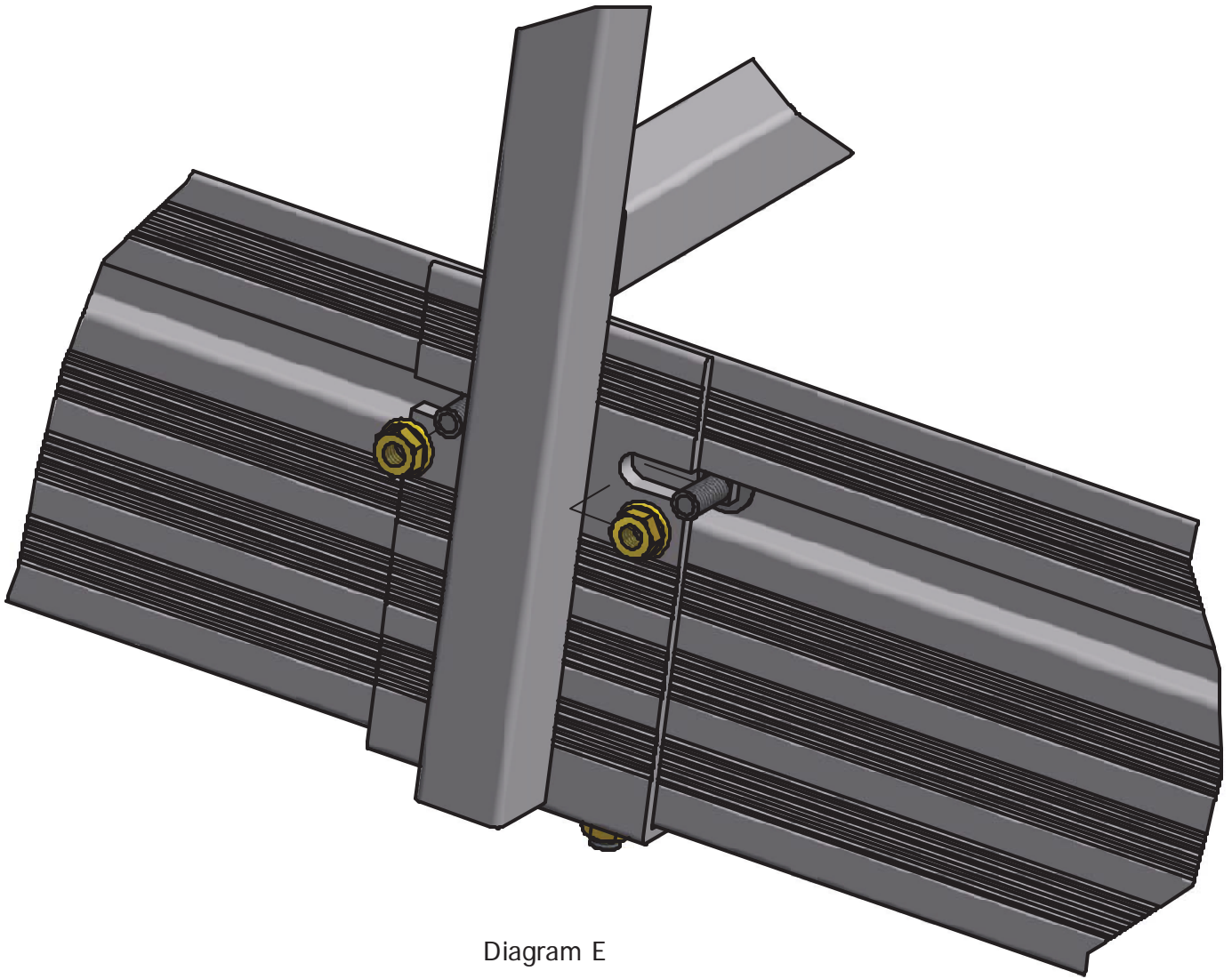


Diagram E