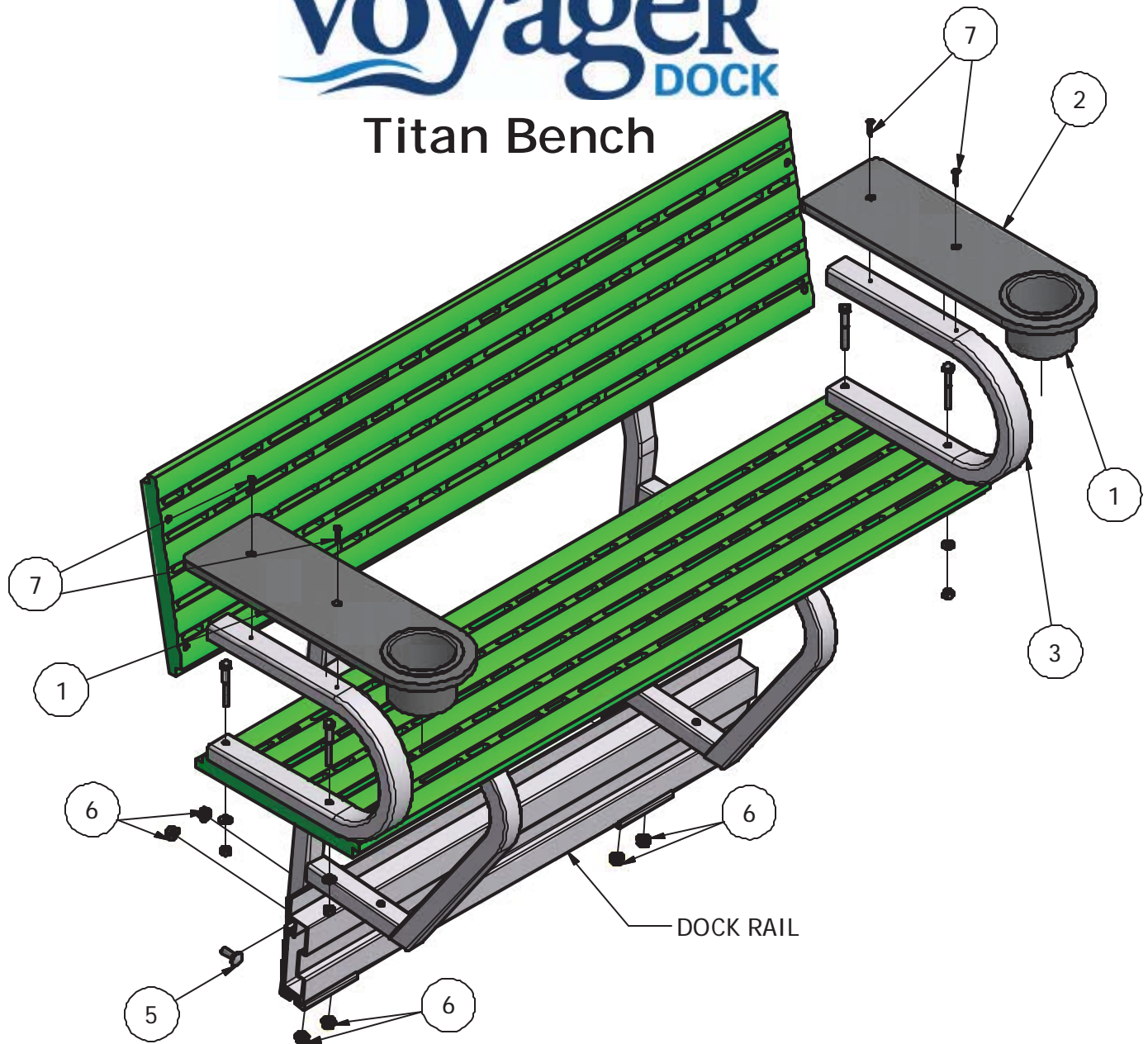


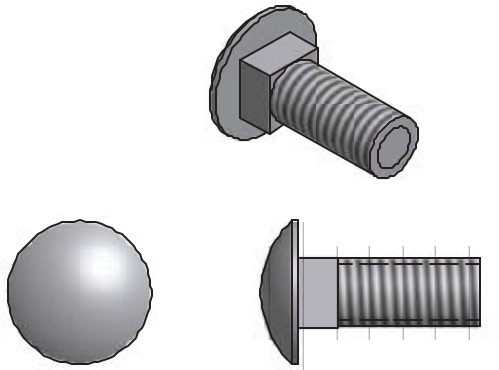
## Titan Bench



### PARTS LIST

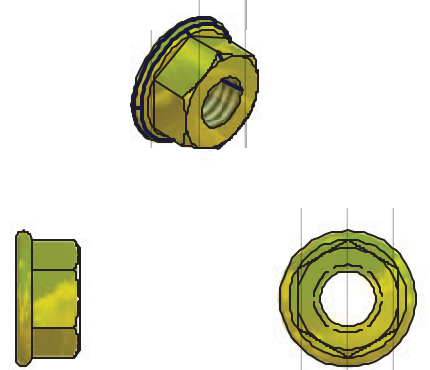
ITEM	QTY	PART NUMBER	DESCRIPTION
1	2	HD-00116	4" CUP HOLDER (GREY)
2	2	VM-015-13	ARMREST
3	2	VM-015-14	ARMREST SUPPORT
4	2	HD-00112	1 1/4 CAP PLUG
5	8	HD-00059	3/8 X 1 SS CAR
6	8	HD-00056	3/8 BRASS FLANGE NUT
7	4	HD-00157	#10-3/4 OVAL HEAD SCREW SS
8	16	HD-00067	1/4 X 5/8 SS FLAT WASHER
9	4	HD-00078	5/16 X .688 SS FLAT WASHER
10	8	HD-00094	1/4-20 X 1-3/4" HCS S/S
11	8	HD-00095	SS ACORN NUT 1/4
12	4	HD-00063	5/16-18 X 2.5" HCS BOLTS S/S
13	4	HD-00080	5/16-UNC NUT S/S

5



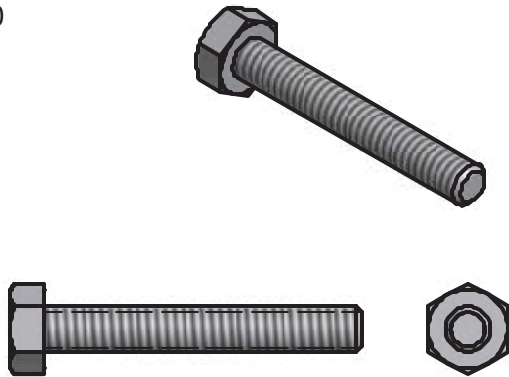
3/8 X 1 S/S CARRIDGE BOLT (8 REQ'D)

6



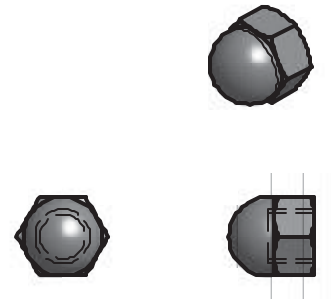
3/8 FLANGE NUT BRASS (8 REQ'D)

10



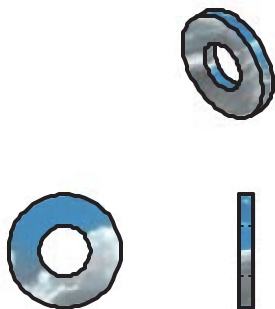
1/4-20 X 1 3/4 HCS BOLTS S/S (8 REQ'D)

11



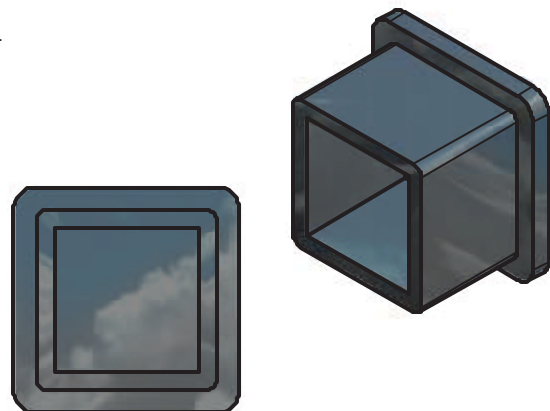
1/4" ACORN NUT S/S (8 REQ'D)

8



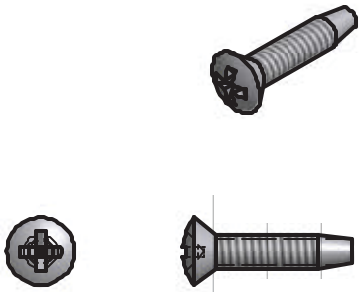
1/4 X 5/8 FLAT WASHER S/S (16 REQ'D)

4



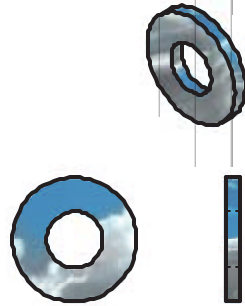
1.25 CAP PLUG (2 REQ'D)

7



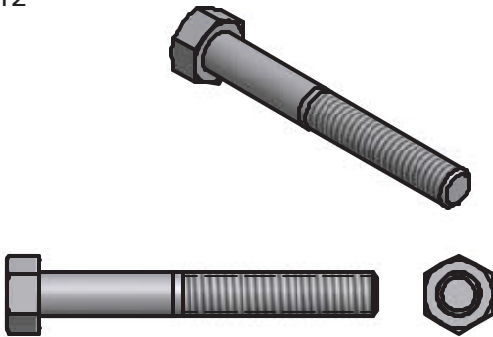
#10.75" OVAL HEAD SCREW SS (4 REQ'D)

9



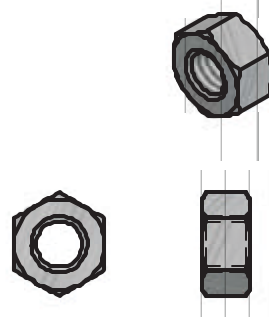
5/16 WASHERS (S/S) (4 REQ'D)

12



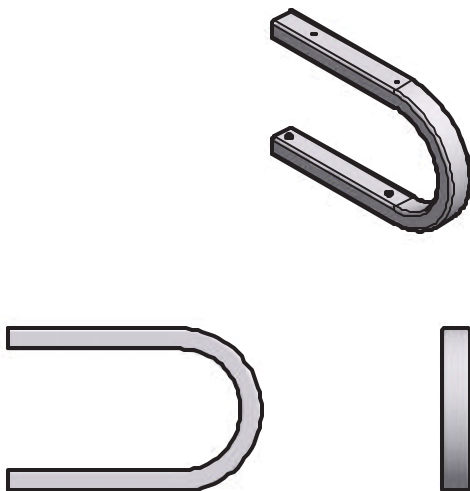
5/16-18 X 2.5" HCS BOLTS S/S (4 REQ'D)

13



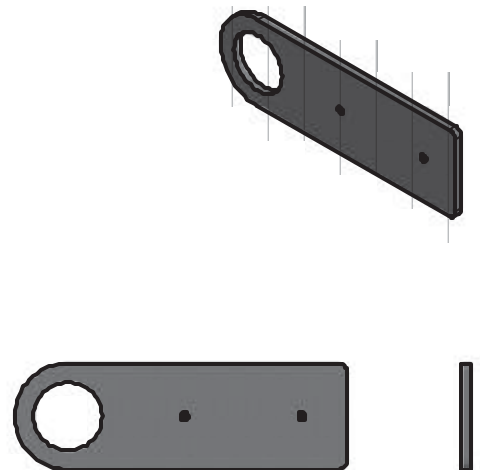
5/16 NUTS (4 REQ'D)

3

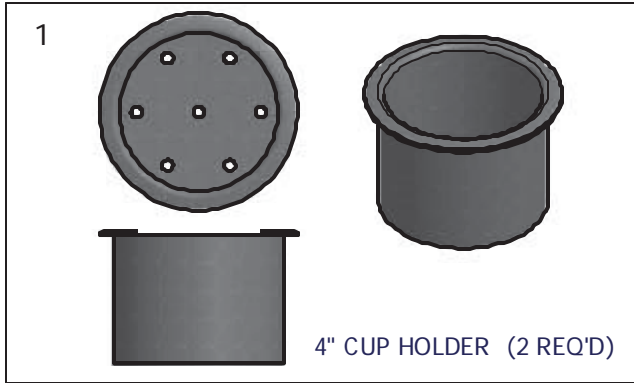


ARMREST SUPPORT (2 REQ'D)

2



ARMREST (2 REQ'D)



**To insure your safety while assembling your Voyager product:**

- Fully read and understand the assembly instructions
- Do not assemble this product if items are missing or damaged
- Wear protective gloves, clothing and eye wear when assembling this product

**Installation procedure**

The following tools will be needed : 2- 9/16" wrenches, 2- ½" wrenches, phillips screw driver.

1. Install 1 ¼" caps into the top of bench leg frames. **Per diagram B.**
2. Attach titan tread assembly's to bench leg frames (for bench seat and backrest) using ¼" x 1 ¾" bolts. **Per diagram C.**
3. Tighten bolts for seat and backrest with 2 -7/16" wrenches.
4. Attach armrest support tube to bench with 2- 5/16" x 2 ½" bolts, washer and nut. **Per diagram D.**
5. Tighten armrest bolts with 2 - 1/2" wrenches.
6. Using phillips screws and screw driver attach armrest to armrest support tube. **Per diagram E.**
7. Repeat steps 4-6 for second armrest.
8. Insert head of 4- carriage bolts into raceway on the underside of the rail and slide to desired location on dock. **Per diagram A.**
9. Hook bench into side of dock rail and slide carriage bolts into brackets. Finger tighten nuts at this time. **Per diagram F.**
10. Put carriage bolt into raceway on the side of dock, slide into bench bracket and install flange nut. **Per diagram G.**

- 11.** Repeat step 10 for remaining 3 carriage bolts.
- 12.** Use 9/16" wrench to tighten all 8 mounting bolts (carriage bolts).
- 13.** Insert cup holder into armrest.

